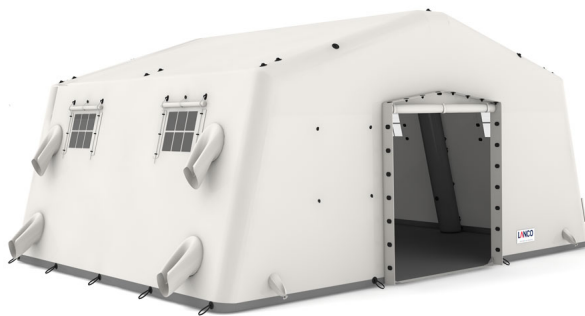




## AZF 6-33 self-erecting tents with fully inflatable frame

### Product Images



### Short Description

Ready to use within minutes, the AZF series is the ideal solution for all emergency situations. Durable, they can be efficiently deployed on any type of terrain.

### Description

#### Frame

Main beams and ridge beams inflatable, made of airtight double-sided PVC coated polyester fabric [1,100 g/m<sup>2</sup>], fixed to the cover and floor. Eaves purlins made of aluminium. Easy replacement of cover and frame. The tents can be set up in 4-7 minutes, depending of the tent size. A pressure relief valve prevents excessive pressure in the frame.

#### Tent skin

Tent skin is made of double-sided PVC coated polyester fabric [750 g/m<sup>2</sup>]; flame resistant, waterproof and mildew resistant.

#### Floor

Floor covering of double-sided PVC coated polyester fabric [750 g/m<sup>2</sup>]. Available with non-slip embossing as option [850 g/m<sup>2</sup>].

Other colors available on request.

Application area	Civil Defence, Triage, Field Hospitals, First Aid Posts, Decontamination and Hazardous Goods Operations, Police/Gendarmerie, Weatherproof Shelter for Sensitive Equipment and Workshops, United Nations, NGOs/Humanitarian organizations
Base area	33.00 m²
Width	6.30 m
Length	5.15 m
Eaves height	2.40 m
Ridge height	3.15 m
Operating pressure	0.30 bar
Weight	160.00 kg