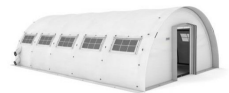




Half-barrel Frame Tent THETA 610

Product Images



Short Description

THETA tents are designed for high stability, easy logistics and comfort in extreme weather conditions and are suitable for medium and long term deployments.

Description

Frame

The frame consists of ground frame, (rectangular profiles), arches and spacers (circular profiles). All profiles are made of black powder-coated aluminum, while all security pins are made of galvanized steel. All parts are designed to make the frame highly transportable - no frame part is longer than 2.15 m or heavier than 7 kg.

Skin and flooring

The tent skin is made of lightweight high quality PVC coated fabric 620g/m², UV and water resistant. The roof and the sidewalls are integrated, while the groundsheet and gables are detachable. The groundsheet is made of PVC fabric (approx. 800 g/m²) and is attached to sidewalls by Velcro.

The THETA tent is equipped with 8 climatization passages, pairs of two, one above the other, in each corner.

Options and accessories

- Additional protective flooring
- Partition walls
- Inner liners
- Sunroofs
- Side entrances
- Entrance modules
- Solid doors
- Rigid modular flooring
- Lights
- Heating
- Air conditioning
- Lettering/branding

Additional Information

Application area	Civil Defence, Triage, Field Hospitals, First Aid Posts, Weatherproof Shelter for Sensitive Equipment and Workshops, Fire department, rescue service and aid organizations
Base area	60.00 m ²
Width	6.00 m
Length	10.00 m
Height	3.00 m
Weight	427.00 kg