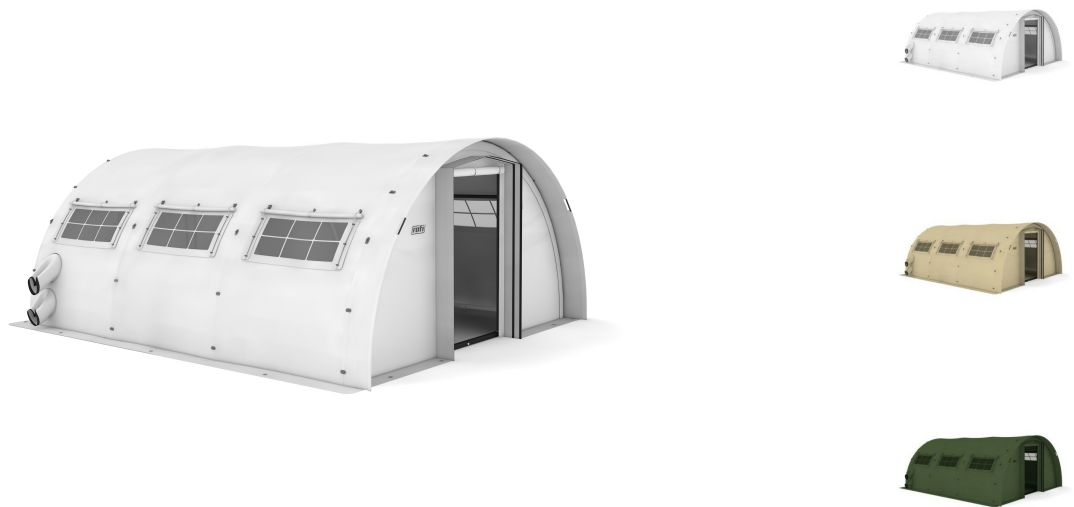




## Half-barrel Frame Tent THETA 506

### Product Images



### Short Description

THETA tents are designed for high stability, easy logistics and comfort in extreme weather conditions and are suitable for medium and long term deployments.

### Description

#### Frame

The frame consists of ground frame, (rectangular profiles), arches and spacers (circular profiles). All profiles are made of black powder-coated aluminum, while all security pins are made of galvanized steel. All parts are designed to make the frame highly transportable - no frame part is longer than 2.15 m or heavier than 7 kg.

#### Skin and flooring

The tent skin is made of lightweight high quality PVC coated fabric 620g/m<sup>2</sup>, UV and water resistant. The roof and the sidewalls are integrated, while the groundsheet and gables are detachable. The groundsheet is made of PVC fabric (approx. 800 g/m<sup>2</sup>) and is attached to sidewalls by Velcro.

The THETA tent is equipped with 8 climatization passages, pairs of two, one above the other, in each corner.

Options and accessories

- Additional protective flooring
- Partition walls
- Inner liners
- Sunroofs
- Side entrances
- Entrance modules
- Solid doors
- Rigid modular flooring
- Lights
- Heating
- Air conditioning
- Lettering/branding

Additional Information

Application area	Civil Defence, Triage, Field Hospitals, First Aid Posts, Weatherproof Shelter for Sensitive Equipment and Workshops, Fire department, rescue service and aid organizations
Base area	30.00 m²
Width	5.00 m
Length	6.00 m
Height	2.50 m
Weight	255.00 kg